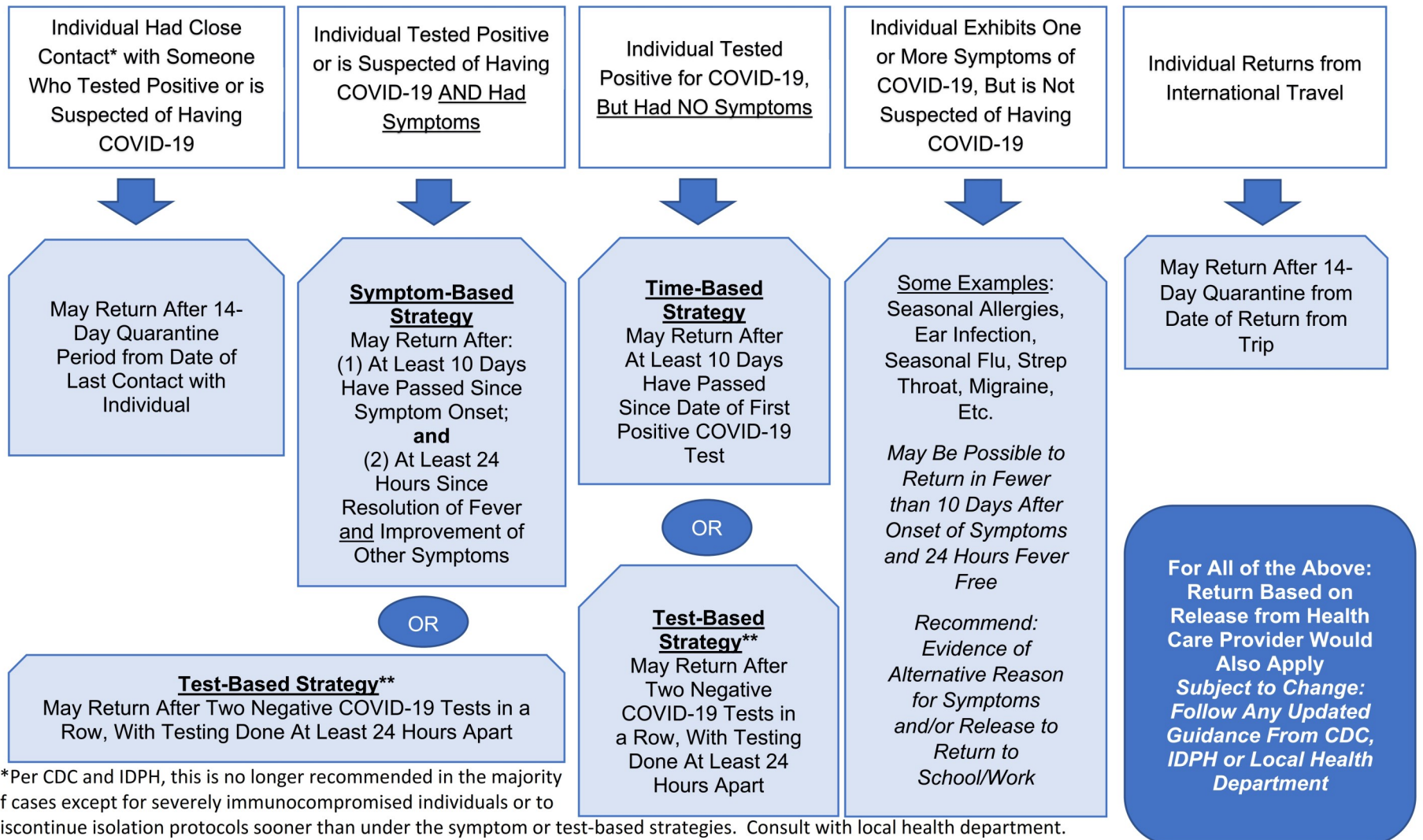


Paris Community Unit School District No. 4 - Crestwood School

RETURN TO SCHOOL/WORK FLOWCHART FOLLOWING A COVID-19 RELATED ABSENCE

Revised August 3, 2020



**Per CDC and IDPH, this is no longer recommended in the majority of cases except for severely immunocompromised individuals or to discontinue isolation protocols sooner than under the symptom or test-based strategies. Consult with local health department.